

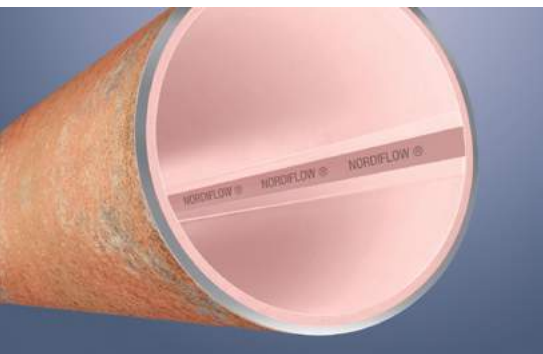
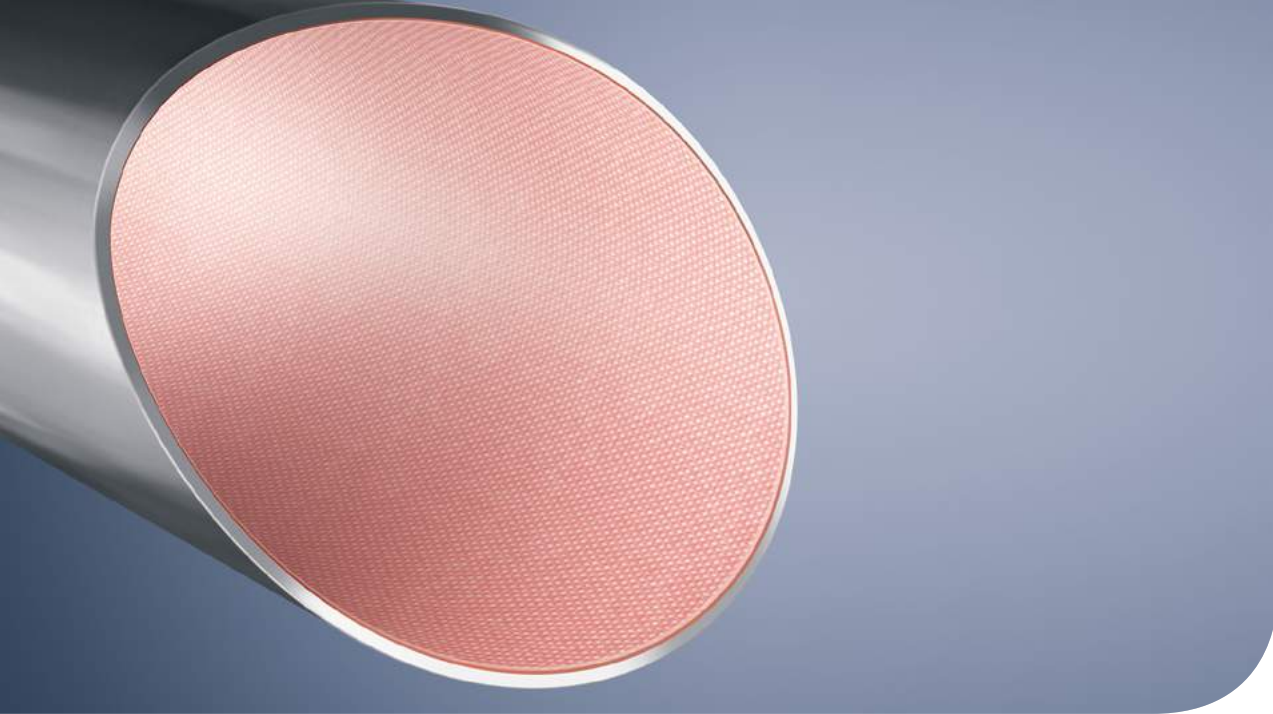
NORDITUBE TECHNOLOGIES

PIPE REHABILITATION - DIGGING WAS YESTERDAY

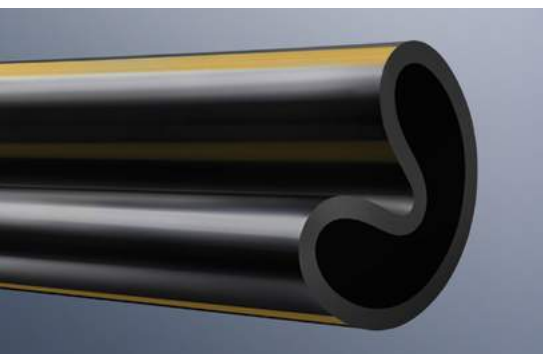


PROVIDING SOLUTIONS

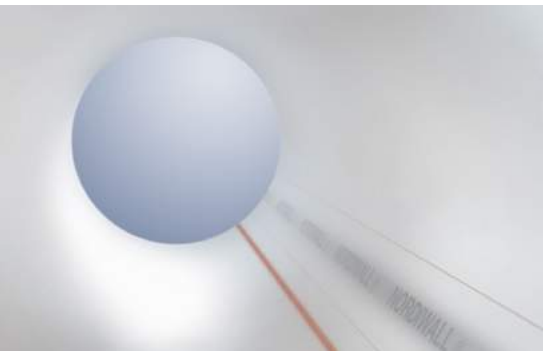




NORDIFLOW - for pressure pipes



r.tec® Close Fit - for pressure and gravity pipes



NORDIWALL - for gravity pipes

NORDITUBE TECHNOLOGIES - YOUR TECHNOLOGY PARTNER

NordiTube Technologies, established since 1987, is a leading technology provider for trenchless pipe rehabilitation and has been producing CIPP liners for more than 30 years. Backed up by a global trading company in Austria and a production site in Belgium, the experts of NordiTube Technologies offer a wide range of innovative systems, materials, equipment, expertise and technical support to customers around the world.

TRENCHLESS PIPE REHABILITATION - OUR EXPERTISE

Underground piping systems are an integral part of urban infrastructure. As pipes age and urban populations grow, quick and safe rehabilitation methods with only minimal impact on the environment and the existing infrastructure are needed.

NordiTube Technologies's portfolio comprises optimised solutions for maintenance, rehabilitation and renewal of gravity and pressure pipes, such as:



SEWAGE



GAS



WATER



INDUSTRY

NordiTube is also specialized in rehabilitation of petroleum and high temperature pipelines.

Our fully-structural and semi-structural solutions are available in dimensions ranging from DN 3" to 70".

OPTIMISED SOLUTIONS FOR YOUR INDIVIDUAL NEEDS

This creates a “one-stop shop” for innovative pipe rehabilitation solutions. Under the motto “all from one source”, NordiTube Technologies provides the entire range of pipe rehabilitation technologies, including materials, equipment, technical support and approved high-end liner systems.

TECHNOLOGIES

- CIPP
- Close-Fit (Pre-deformed PE pipe)
- Spot repair
- Rehabilitation of tanks and manholes
- Trenchless renewal

PRODUCTS

We provide a wide array of pipe rehabilitation materials, including:

- Felt liner
- Glass reinforced liner
- Round woven textile liner
- Factory impregnated liner
- Resin
- Pre-deformed PE pipe (r.tec® Close Fit)
- Special mortar

SYSTEMS

Depending on requirements, application areas and host pipe conditions, you may choose from the following pipelining technology systems:

EQUIPMENT

- Pipe cleaning equipment
- CCTV inspection equipment
- Rehabilitation robots
- Liner impregnation units
- Inversion units
- Curing units
- Accessories (e.g. telemetric system, special tools, etc...)

SERVICE

- Choice of system
- Conceptual design and engineering
- Project assistance
- Approvals
- On-site supervision
- Development of customized solutions



NORDITUBE TECHNOLOGIES AT A GLANCE:

- Trenchless pipe technologies for pressure and gravity pipes ranging from DN 3” to 70”
- Equipment for cleaning, inspection and pipe rehabilitation
- Technical support



CIPP installation unit



High pressure cleaning unit

	NORDIFLOW	TUBETEX	NORDIWALL	UNILINER	r.tec® CLOSE FIT
Application area	Pressure: Sewer, Water, Industry	Pressure: Water, Gas, Industry	Gravity: Sewer, Industry	Gravity: Sewer, Industry	Pressure & Gravity: Sewer, Water, Gas, Industry
Diameter*	6” – 42”	3” – 48”	6” – 42”	6” – 70”	6” – 16”
Material	Glass fibre reinforced felt	Round woven polyester yarn	Polyester needled felt	Polyester needled felt	PE 100
Coating	PE	PE, TPU or Hytrel™	PE or PP	PE or PP	/
Resin	r.tec 582-25 OF NOR-DIPOX D	r.tec 512-22 NORDIPOX TX	r.tec 521-26 UP	r.tec 521-26 UP	/
Special application	<ul style="list-style-type: none"> • NORDIFLOW Inversion system 	<ul style="list-style-type: none"> • TUBETEX GRP Glass fibre reinforced • TUBETEX COMBI LINER Additional felt 	<ul style="list-style-type: none"> • NORDIWALL HT High temperature up to 280°F • NORDIWALL FLEX Very flexible felt 		

* Special diameter on demand



Norditube Technologies SE

Bruckbachweg 23
4203 Altenberg
Austria

P +43 (0) 7230 86 87 0
F +43 (0) 7230 86 87 631

sales@norditube.com
www.norditube.com

Your contact in North America

Jay Keating, P.E.

P +1 (714) 267 1030

jay.keating@norditube.com

NORDITUBE
TECHNOLOGIES

PROVIDING SOLUTIONS