

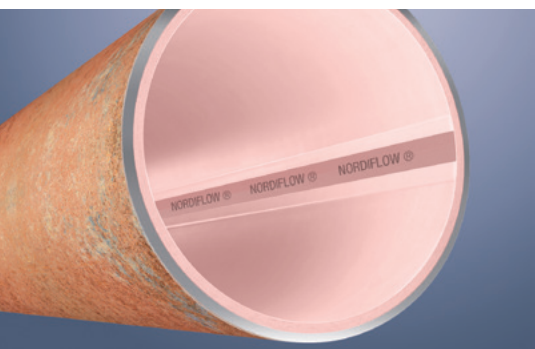
# NORDITUBE TECHNOLOGIES

TRENCHLESS PIPE REHABILITATION



PROVIDING SOLUTIONS

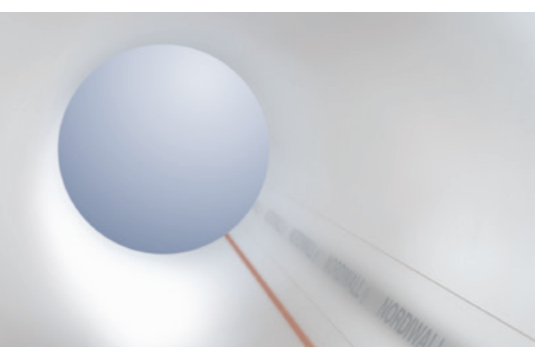




NORDIFLOW – for pressure pipes



TUBETEX is a seamless woven fabric liner - relies on adhesion with the host pipe



NORDIWALL – for gravity pipes

## NORDITUBE TECHNOLOGIES - YOUR TECHNOLOGY PARTNER

NordiTube Technologies, established since 1987, is a leading technology provider for trenchless pipe rehabilitation and has been producing CIPP liners for more than 30 years. Having its seat in Belgium, the experts of NordiTube Technologies offer a wide range of innovative systems, materials, equipment, expertise and technical support to customers around the world.

## TRENCHLESS PIPE REHABILITATION - OUR EXPERTISE

Underground piping systems are an integral part of urban infrastructure. As pipes age and urban populations grow, quick and safe rehabilitation methods with only minimal impact on the environment and the existing infrastructure are needed.

NordiTube Technologies's portfolio comprises optimised solutions for maintenance, rehabilitation and renewal of gravity and pressure pipes, such as:



SEWAGE



GAS



PETROCHEMISTRY



WATER



INDUSTRY



HEATING

Our fully-structural and semi-structural solutions are available in dimensions ranging from DN 50 to 1400 mm.

## INDIVIDUAL SOLUTIONS FOR YOUR NEEDS

This creates a “one-stop shop” for innovative pipe rehabilitation solutions. Under the motto “all from one source”, NordiTube Technologies provides the entire range of pipe rehabilitation technologies, including materials, equipment, technical support and approved high-end liner systems.

### TECHNOLOGIES

- CIPP (Cured-In-Place-Pipe)
- PIPP (Pull-In-Place-Pipe)
- Close-Fit (Pre-Deformed PE Pipe)
- Spiral Wound Systems
- Rehabilitation of tanks and manholes
- Trenchless renewal

### PRODUCTS

We provide a wide array of pipe rehabilitation materials, including:

- Felt Liner
- Glass Reinforced Liner
- Round Woven Textile Liner
- Fiber Reinforced Inserted Hose
- Factory Impregnated Liner
- Resin
- Pre-Deformed PE Pipe (Close Fit)
- Spiral Wound Systems (for new construction)

### EQUIPMENT

- Pipe Cleaning Equipment
- Liner Impregnation Units
- Inversion Units
- Curing Units
- Accessories (e.g. telemetric system, special tools, etc...)

### SERVICE

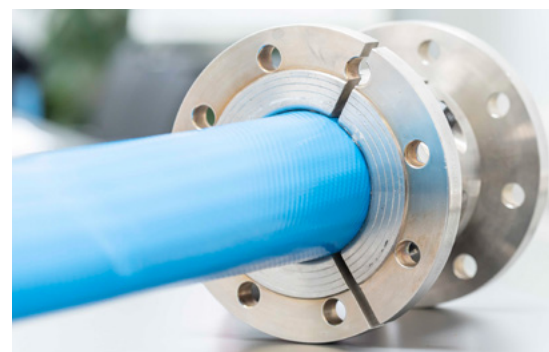
- Choice of system
- Conceptual design and engineering
- Project assistance
- Approvals
- On-site supervision
- Development of customized solutions

### NORDITUBE TECHNOLOGIES AT A GLANCE:

- Trenchless pipe technologies for pressure and gravity pipes ranging from DN 50 – 1400 mm
- Equipment for cleaning and pipe rehabilitation
- Technical support



CIPP installation unit



IH Liner – The resin free rehabilitation system for pressure pipes

### SYSTEMS

Depending on requirements, application areas and host pipe conditions, you may choose from the following pipelining technology systems:

	PRESSURE				GRAVITY
	NORDIFLOW	TUBETEX	IH LINER	CLOSE FIT	NORDIWALL
Application area	Sewer, Water, Industry	Water, Gas, Industry	Sewer, Water, Gas, Industry	Sewer, Water, Gas, Industry	Sewer, Industry
Special application	<ul style="list-style-type: none"> <li>• NORDIFLOW W PE Pull-in system</li> <li>• NORDIFLOW W PE Inversion system</li> <li>• NORDIFLOW W PP Pull-in system</li> <li>• NORDIFLOW W PP Inversion system</li> </ul>	<ul style="list-style-type: none"> <li>• TUBETEX W For drinking water pipes</li> <li>• TUBETEX G For gas pipes</li> <li>• TUBETEX COMBILINER With additional feltlayer</li> </ul>	<ul style="list-style-type: none"> <li>• Water: PN4-PN16</li> <li>• Heat: PN16</li> <li>• Gas: PN40</li> </ul>	<ul style="list-style-type: none"> <li>• 100 % PE Without gap</li> </ul>	<ul style="list-style-type: none"> <li>• NORDIWALL HT High temperature up to 115°C</li> <li>• NORDIWALL FLEX Very flexible felt</li> <li>• NORDIWALL FLEX LITE Lateral DN 50mm+</li> </ul>
Diameter*	150–1400 mm	80–1200 mm	50–1200 mm	150–400 mm	50–1400 mm
Material	Glass fibre reinforced felt	Round woven polyester yarn	Circular woven reinforcement polyester and/or kevlar	PE 100 PE 100 RC	Polyester needled felt
Coating	PE or PP	PE, TPU or TPC	PE, TPU or other elastomers	/	PE or PP
Resin	582-25 OF	MK III	/	/	EP, UP, VE

\* Special diameter on demand



**Norditube Technologies SE**

Rue Ernest Solvay 181  
4000 Liège  
Belgium

+32 (0) 4 254 69 10

**[sales@norditube.com](mailto:sales@norditube.com)**  
**[www.norditube.com](http://www.norditube.com)**



NORDITUBE  
TECHNOLOGIES

---

PROVIDING SOLUTIONS