

NORDITUBE TECHNOLOGIES

TRENCHLESS PIPE REHABILITATION

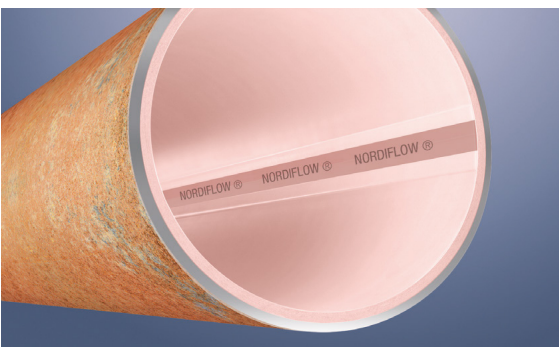


PROVIDING SOLUTIONS

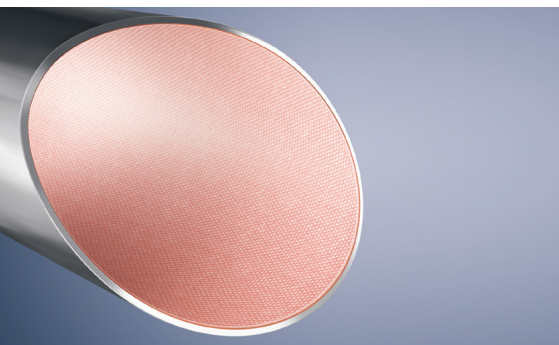




- NordiTube companies - Production & Sales
- NordiTube partner countries - Overseas



NORDIFLOW – structural solution for pressure pipes



TUBETEX – semi-structural solution for pressure pipes



NORDILOC - spiral wound solutions for gravity pipes

NORDITUBE TECHNOLOGIES - YOUR TECHNOLOGY PARTNER

NordiTube Technologies, founded in 1987, is a global leader in trenchless pipe rehabilitation and has produced CIPP lining materials for over 3 decades with service teams worldwide. NordiTube Technologies offer a wide range of services including engineering design, material supply, specialized equipment (for sale or lease), technical support and after-sales warranty to customers around the world.

TRENCHLESS PIPE REHABILITATION - OUR EXPERTISE

Underground piping systems are an integral part of urban infrastructure. As pipes age and urban populations grow, quick and safe rehabilitation methods with only minimal impact on the environment and the existing infrastructure are needed.

NordiTube Technologies offers a comprehensive portfolio of advanced solutions for the maintenance, rehabilitation, and renewal of both gravity and pressure pipes, including:



SEWER



GAS



WATER



INDUSTRY

NordiTube's CIPP and PIPP trenchless pressure and gravity pipe rehabilitation systems cover a broad range from diameter 50 mm to 1400 mm (2" to 56").

Additionally, the NORDILOC spiral wound pipe lining system is designed to accommodate gravity pipes with diameters ranging from 150 mm to 3000 mm (6" to 120").

NORDITUBE TECHNOLOGIES AT A GLANCE:

- Trenchless pipe technologies for pressure and gravity pipes DN 50 - 3000mm / 2" - 120"
- Equipment for pipe cleaning and rehabilitation
- Technical support

INDIVIDUAL SOLUTIONS FOR YOUR NEEDS

This creates a "one-stop shop" for innovative pipe rehabilitation solutions. Under the motto "from one trusted source," NordiTube Technologies offers comprehensive pipe rehabilitation solutions, including materials, equipment, technical support, and certified premium lining supplies.

TECHNOLOGIES

- CIPP (Cured-In-Place-Pipe)
- PIPP (Pull-In-Place-Pipe)
- Close-Fit (Pre-Deformed PE Pipe)
- Spiral Wound Systems
- Rehabilitation of tanks and manholes
- Trenchless renewal

EQUIPMENT (FOR SALE OR LEASE)

- Pipe Cleaning Equipment
- Impregnation Units
- Inversion Units
- Curing Units
- Spiral Wound Equipment
- Accessories (e.g. telemetric system, special tools, etc...)

PRODUCTS

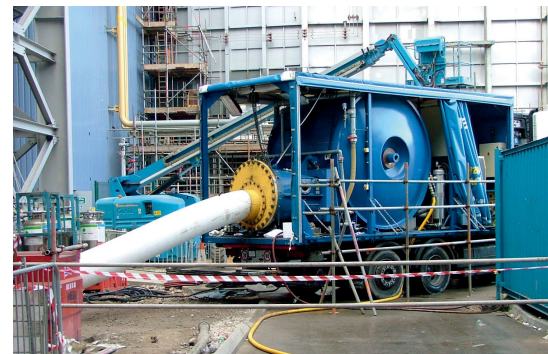
- Felt Lining material
- Glass Reinforced Lining material
- Spiral Wound material
- Round Woven Textile Lining material
- Fiber reinforced lay flat hose
- High performance epoxy resin system
- Pre-Deformed PE Pipe (Close Fit)

SERVICE

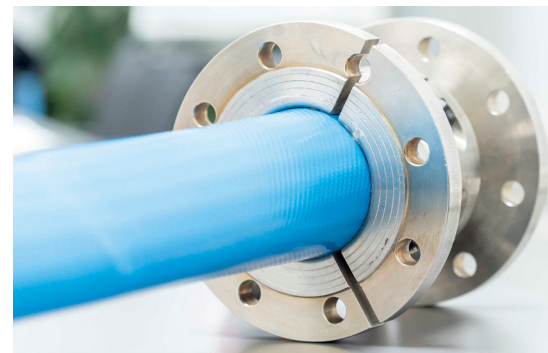
- Choice of system
- Conceptual design and engineering
- Project assistance
- Approvals
- On-site supervision
- Development of customized solutions
- After-sales warranty

SYSTEMS

Depending on requirements, application areas and host pipe conditions, you may choose from the following pipelining technology system:



CIPP installation unit



NORDILINER - The resin free rehabilitation system for pressure pipes

	PRESSURE				GRAVITY	
	NORDIFLOW	TUBETEX	NORDILINER	CLOSE FIT	NORDILOC	NORDIWALL
Application area	Water, Industrial, District Heating	Water, Gas	Water, Sewer, Industrial	Sewer, Water, Gas, Industrial	Sewer	Sewer, Industrial District Heating
Special application	<ul style="list-style-type: none"> • NORDIFLOW W PE Pull-in / Inversion system • NORDIFLOW W PP Pull-in / Inversion system • NORDIFLOW HT High temperature 	<ul style="list-style-type: none"> • TUBETEX W For drinking water pipes • TUBETEX G For gas pipes 	<ul style="list-style-type: none"> • PN4-PN40 	<ul style="list-style-type: none"> • 100 % PE Without gap 	<ul style="list-style-type: none"> • NORDILOC X For small diameter • NORDILOC S For large diameter 	<ul style="list-style-type: none"> • NORDIWALL HT High temperature • NORDIWALL FLEX Standard product • NORDIWALL FLEX LITE Lateral DN 50mm+
Diameter*	150-1400 mm / 6" - 56"	80-1200 mm / 3" - 48"	50-1200 mm / 2" - 48"	200-400 mm / 8" - 16"	150 - 3000 mm / 6" - 120"	100-1400 mm / 4" - 56"
Material	Glass fibre reinforced felt	Seamless woven fabric polyester yarns	Circular woven reinforcement polyester or hybrid	PE 100 PE 100 RC	PVC With / without steel	Polyester needed felt
Coating	PE, PP or HT	PE, TPU or TPC	PE, TPU or other elastomers	/	/	PE, PP or HT
Resin	582-25 OF NordiHEAT	MK III	/	/	/	EP, UP, VE NordiHEAT

* Special diameter on demand

NORDITUBE
TECHNOLOGIES

PROVIDING SOLUTIONS



www.norditube.com



OUR GLOBAL SERVICE TEAM

Europe, Africa, Western & Central Asia, South America

Norditube Technologies SE

Rue Ernest Solvay 181
4000 Liège
BELGIUM
+32(0) 4 254 69 10
europaenorditube.com

North & Central America

Norditube USA LLC

3017 W County Rd STE
Midland, TX
USA 79706
+1 514 348 1141
+1 714 267 1030
north-americaenorditube.com

Asia-Pacific

Norditube Asia-Pacific PTE. LTD.

151 Chin Swee Road
#01-39 Manhattan House
SINGAPORE 169876
+61 410 220 382
asia-pacificenorditube.com

Norditube AUS PTY LTD

11 Brock Street
Port Adelaide SA 5015
AUSTRALIA
+61 404 510 940
asia-pacificenorditube.com

Mainland China

5Elem & Norditube Pipeline Technology (Shanghai) Co., Ltd

1st Floor of Building 15,
No. 481 Guiping Road
Xuhui District, Shanghai
CHINA 200233
+86 21 64900309
cn@5elem.com