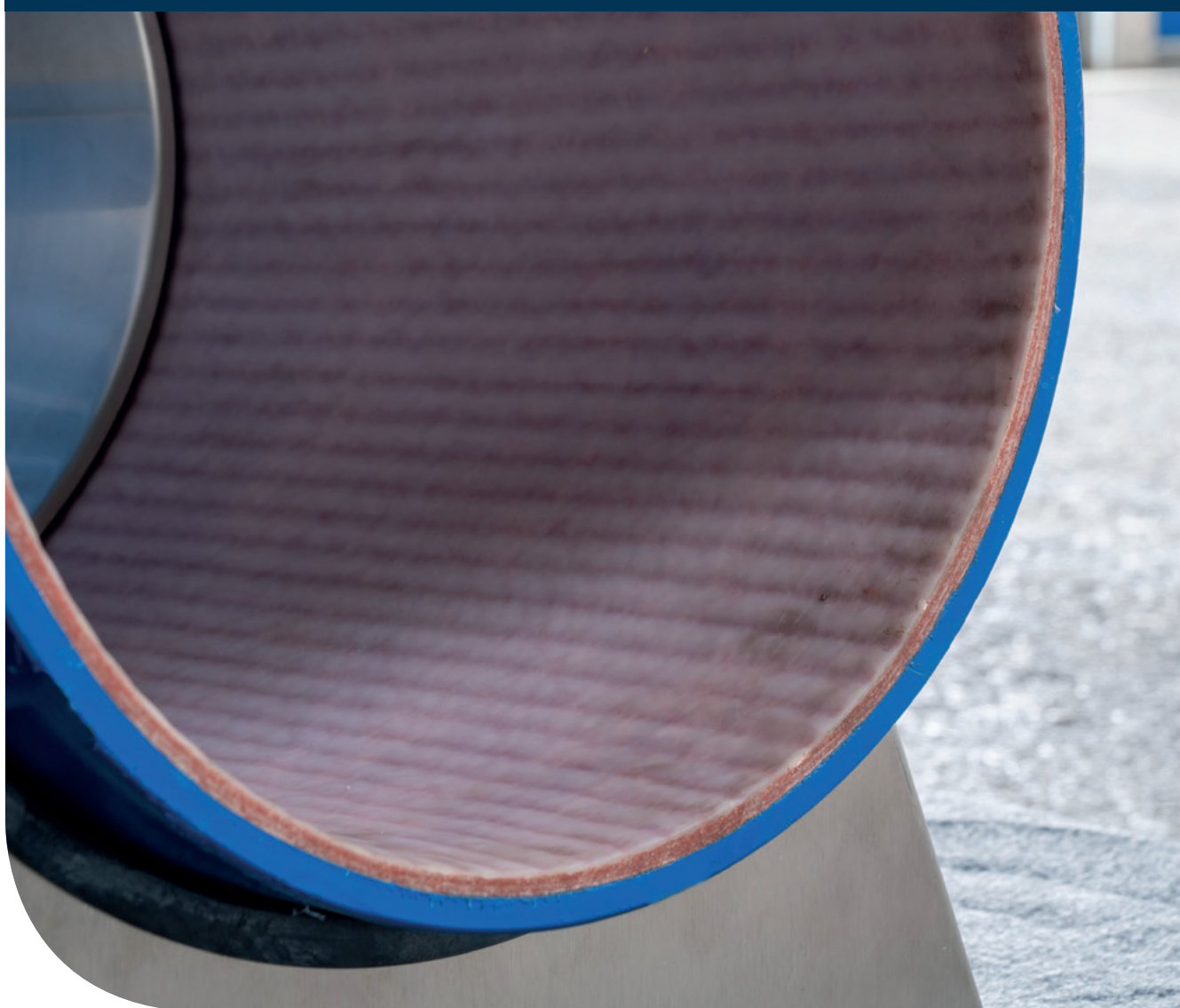


NORDIFLOW

THE STRONG AND INDEPENDENT CLASS A
PRESSURE LINER

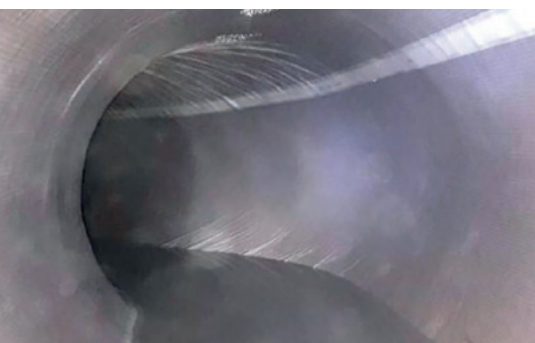


PROVIDING SOLUTIONS





NORDIFLOW is the independent solution for trenchless pipe rehabilitation of pressure pipes



A STRONG AND INDEPENDENT SOLUTION FOR PRESSURE PIPES

NORDIFLOW is the perfect CIPP solution for the rehabilitation of potable water, sewer pressure and industrial pressure pipes to resist all internal and external loads as well as negative pressure/vacuum.

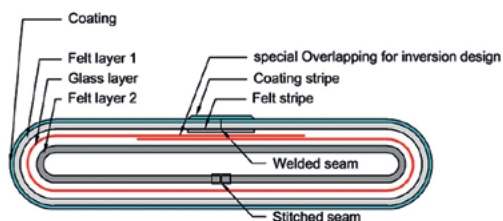
THE CIPP SOLUTION WITH GLASS-FIBRE REINFORCEMENT

The liner is a special design of fibre glass and felt layers. Through the glass-fibre reinforcement the liner enables a strong liner structure.

PRODUCT CHARACTERISTICS

In order to withstand the loads, the system consists of the individual components of glass fibre reinforced needed felt hose combined with a modified two component epoxy resin system. The coating – permanent internal membrane – is made of PE or PP.

This product characteristic ensures the required strength to be pressure resistant up to 16 bar PFA or 20 bar PMA, depending on diameter.



NORDIFLOW is a fully or semi-structural coated felt liner with glass-fibre reinforcement

Application area	Sewer Pressure, Potable Water, Industrial Pressure Pipes
Diameter	150-1400 mm
Material	Glass-fibre reinforced needle felt
Coating	PE or PP
Resin	582-250F
Pressure Rate	16 bar PFA, 20 bar PMA (depending on diameter)
Classification according to ISO 11295	A & B

CUSTOMIZED SOLUTION TO SUIT YOUR REQUIREMENTS

NORDIFLOW provides a system with two different material compositions that can be adapted depending on your requirements. Further, there are two different installation methods for this system possible and two different classifications according to ISO 11295 available.

COATING

NORDIFLOW provides The coating – permanent internal membrane – is made of PE or PP.

- NORDIFLOW W PE
- NORDIFLOW W PP

INSTALLATION METHODS

For the installation the NORDIFLOW is offered as a pull-in or inversion system, in which the complete liner is installed inside-out in the host pipe.

- NORDIFLOW PULL-IN
- NORDIFLOW INVERSION

CLASSIFICATION

NORDIFLOW is provided as “Class A” or “Class B” liner according to ISO 11295.

CLASS A – FULLY STRUCTURAL

As a “Class A” liner NORDIFLOW is considered as a fully structural, independent CIPP system. This means the system is not depending on the structural integrity of the existing pipe and therefore classified as “Class A” according to ISO 11295 as stand-alone pipe.

CLASS B – SEMI STRUCTURAL

Furthermore, NORDIFLOW can be also designed as a semi-structural liner classified as “Class B” according to ISO 11295.

THE ADVANTAGES AT A GLANCE

In addition to the general advantages of trenchless pipe rehabilitation, NORDIFLOW offers further benefits:

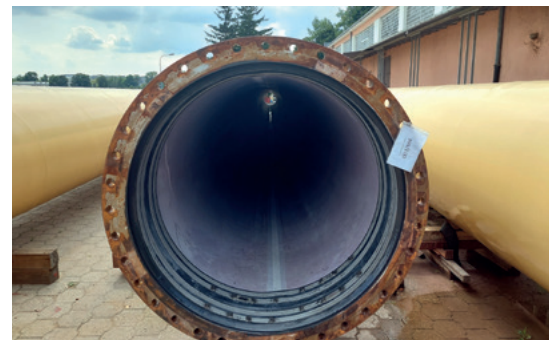
- The liner can be designed as Class A fully-structural or Class B semi-structural
- Long-term operating pressure PFA up to 16 bar (depending on diameter)
- Short-term operating pressure PMA up to 20 bar (depending on diameter)
- Individual lengths and bends are possible
- Approved system for potable water in combination with resins from NordiTube



Approved liner-resin combination



Liner installation with inversion system



Quality & Approvals:

NORDIFLOW, in combination with our potable-water-approved resin, is tested and verified regularly by external laboratories. The system is certified according to the following standards:

- ACS
- AS-NZS 4020
- BS6920
- DM174
- NSF 61
- DVGW
- SS375
- Other internal industrial approvals



OUR GLOBAL SERVICE TEAM

Europe, Africa, Western & Central Asia, South America

Norditube Technologies SE

Rue Ernest Solvay 181
4000 Liège
BELGIUM
+32(0) 4 254 69 10
europe@norditube.com

North & Central America

Norditube USA LLC

3017 W County Rd STE 129
Midland, TX
USA 79706
+1 514 348 1141
+1 714 267 1030
north-america@norditube.com

Asia-Pacific

Norditube Asia-Pacific PTE. LTD.

151 Chin Swee Road
#01-39 Manhattan House
SINGAPORE 169876
+61 410 220 382
asia-pacific@norditube.com

Norditube AUS PTY LTD

11 Brock Street
Port Adelaide SA 5015
AUSTRALIA
+61 404 510 940
asia-pacific@norditube.com

Mainland China

5Elem & Norditube Pipeline Technology (Shanghai) Co., Ltd

1st Floor of Building 15,
No. 481 Guiping Road
Xuhui District, Shanghai
CHINA 200233
+86 21 64900309
cn@5elem.com

NORDITUBE
TECHNOLOGIES

PROVIDING SOLUTIONS



www.norditube.com